

**United States Department of the Interior**  
**National Park Service**

**National Register of Historic Places**  
**Continuation Sheet**

Pathfinder Dam Historic District

Name of Property

Natrona, Wyoming

County and State

Name of multiple listing (if applicable)

Section number   9   Page   1  

**Current Photographs**

Name of Property: Pathfinder Dam Historic District

Vicinity: Alcova

County: Natrona

State: Wyoming

Name of Photographer: Jim Bailey, Ph.D., Bureau of Reclamation

Date of Photographs: Photos #1-43; May 29-30, 2013; Addendum (photos #44-50) September 9, 2014

Location of Original Digital Files: Bureau of Reclamation, Denver CO 80225

Number of Photographs: 50



Photo #1: Pathfinder Dam. Camera facing west.

**United States Department of the Interior**  
**National Park Service**

**National Register of Historic Places**  
**Continuation Sheet**

Section number   9   Page   2  

Pathfinder Dam Historic District

Name of Property

Natrona, Wyoming

County and State

Name of multiple listing (if applicable)



Photo #2: Pathfinder Dam from south abutment. Camera facing north.



**United States Department of the Interior**  
**National Park Service**

**National Register of Historic Places**  
**Continuation Sheet**

Section number   9   Page   3  

Pathfinder Dam Historic District

Name of Property

Natrona, Wyoming

County and State

Name of multiple listing (if applicable)



Photo #3: Pathfinder Dam, camera facing northwest. Note south access ladderway on canyon wall in the left of the photo (Feature G, contributing). Also note the elevator and associated ladder and walkways (collectively Feature B, non-contributing) leading to high-pressure gate access structure (Quonset hut) and river outlet control house in the lower right corner of the photo (both part of Feature E, non-contributing).

**United States Department of the Interior**  
National Park Service

**National Register of Historic Places**  
**Continuation Sheet**

Section number   9   Page   4  

Pathfinder Dam Historic District

Name of Property

Natrona, Wyoming

County and State

Name of multiple listing (if applicable)



Photo #4: Pathfinder Dam, south access ladderway (Feature G, contributing), and south tunnel outlet and auxiliary tunnel balanced valve control house (both elements of Feature F, non-contributing). The south tunnel outlet is the large opening visible to lower left of the ladderway; the value house is the small structure in the rock face to the right of the ladderway. Camera facing southwest.



**United States Department of the Interior**  
**National Park Service**

**National Register of Historic Places**  
**Continuation Sheet**

Section number   9   Page   5  

Pathfinder Dam Historic District

Name of Property

Natrona, Wyoming

County and State

Name of multiple listing (if applicable)



Photo #5: Pathfinder Dam's upstream face, and Emergency Gatehouse (Feature C, contributing) on the left. Note new concrete spillway ogee weir and apron (Feature J, non-contributing). Camera facing southeast.

**United States Department of the Interior**  
**National Park Service**

**National Register of Historic Places**  
**Continuation Sheet**

Section number 9 Page 6

Pathfinder Dam Historic District

Name of Property

Natrona, Wyoming

County and State

Name of multiple listing (if applicable)



Photo #6: Emergency Gatehouse at left of view; the Fremont Canyon Power Plant Conduit Fixed Wheel Gatehouse at center of the view (Feature K, non-contributing); the facility access walkway (Feature I, non-contributing) across the upstream end of the Pathfinder spillway. The new spillway ogee weir and concrete apron (Feature J, non-contributing) are to the right of the walkway, and the natural (original) surface of the spillway is the left of the walkway. Pathfinder main quarry (Feature 7A, non-contributing) was situated in the area of the spillway seen here to the left of the walkway, and was incorporated in 1909 into the spillway channel. Camera facing south.



**United States Department of the Interior**  
National Park Service

**National Register of Historic Places**  
**Continuation Sheet**

Section number   9   Page   7  

Pathfinder Dam Historic District

Name of Property

Natrona, Wyoming

County and State

Name of multiple listing (if applicable)



Photo #7: New spillway ogee weir and concrete apron, completed in 2012, Fremont Canyon Fixed Wheel Gatehouse, and Emergency Gatehouse. Camera facing south.

**United States Department of the Interior**  
**National Park Service**

**National Register of Historic Places**  
**Continuation Sheet**

Section number   9   Page   8  

Pathfinder Dam Historic District

Name of Property

Natrona, Wyoming

County and State

Name of multiple listing (if applicable)



Photo #8: Pathfinder Dam Emergency Gatehouse (Feature C, non-contributing). Camera looking west.



**United States Department of the Interior**  
National Park Service

**National Register of Historic Places**  
**Continuation Sheet**

Section number   9   Page   9  

Pathfinder Dam Historic District

Name of Property

Natrona, Wyoming

County and State

Name of multiple listing (if applicable)



Photo #9: In the foreground, a section of the spillway and spillway training wall (Feature H, contributing). Behind, from left are: the Sluice Gatehouse (Feature D, non-contributing) with the Emergency Gatehouse behind it; the north cableway tower and associated concrete anchor pad and connecting cable (Feature M, contributing); and the Fixed Wheel Gatehouse. Camera facing northwest.

**United States Department of the Interior**  
**National Park Service**

**National Register of Historic Places**  
**Continuation Sheet**

Section number   9   Page  10 

Pathfinder Dam Historic District

Name of Property

Natrona, Wyoming

County and State

Name of multiple listing (if applicable)



Photo #10: Canyon floor below Pathfinder Dam, north side of river, showing the access structures to the high-pressure gates (Quonset hut to left) and the river outlet works control house (right in canyon wall), and the outlet for the 60-inch Jet-Flow valve (all part of Feature E, non-contributing). Camera facing downward and northwest.



**United States Department of the Interior**  
**National Park Service**

**National Register of Historic Places**  
**Continuation Sheet**

Section number   9   Page  11 

Pathfinder Dam Historic District

Name of Property

Natrona, Wyoming

County and State

Name of multiple listing (if applicable)



Photo #11: View from above of (from left) the dam's downstream face, the elevator track, walkway, and the high-pressure gate control (Quonset hut) access structure. Camera facing down and northeast.

**United States Department of the Interior**  
National Park Service

**National Register of Historic Places**  
**Continuation Sheet**

Section number   9   Page  12 

Pathfinder Dam Historic District

Name of Property

Natrona, Wyoming

County and State

Name of multiple listing (if applicable)



Photo #12: Elevator machine hoist house and Kimball elevator (Feature B, non-contributing).  
Camera facing southwest.



**United States Department of the Interior**  
**National Park Service**

**National Register of Historic Places**  
**Continuation Sheet**

Section number   9   Page  13 

Pathfinder Dam Historic District

Name of Property

Natrona, Wyoming

County and State

Name of multiple listing (if applicable)



Photo #13: View of Pathfinder facility at the dam crest elevation. From the left: the north cableway tower; Fremont Canyon Power Plant Fixed Wheel Gatehouse; Sluice Gatehouse; Emergency Gatehouse; and south tramway tower. Upper face of the new spillway ogee weir in foreground. Camera facing southeast.

**United States Department of the Interior**  
National Park Service

**National Register of Historic Places**  
**Continuation Sheet**

Section number   9   Page  14 

Pathfinder Dam Historic District

Name of Property

Natrona, Wyoming

County and State

Name of multiple listing (if applicable)



Photo #14: Pathfinder Dam crest, note safety fencing on right and parapet wall on left, and elevator machine house. Sluice Gatehouse and north cableway tower are immediately to the right of elevator machine house. Camera facing north.



**United States Department of the Interior**  
National Park Service

**National Register of Historic Places**  
**Continuation Sheet**

Pathfinder Dam Historic District

Name of Property

Natrona, Wyoming

County and State

Name of multiple listing (if applicable)

Section number   9   Page  15 



Photo #15: From left, LeTourneau electric deck crane (Feature L, non-contributing), Sluice Gatehouse, and north cableway tower. The spillway training wall extends from the right foreground over to connect with the dam's left (north) abutment in the center of the view. Camera facing southwest.

**United States Department of the Interior**  
National Park Service

**National Register of Historic Places**  
**Continuation Sheet**

Section number   9   Page  16 

Pathfinder Dam Historic District

Name of Property

Natrona, Wyoming

County and State

Name of multiple listing (if applicable)



Photo #16: From left, dam crest, spillway training wall, elevator machine house, north cableway tower, Sluice Gatehouse, and Emergency Gatehouse. "Natural" spillway in foreground. The main quarry is out of view to the left. Camera facing south-southwest.



**United States Department of the Interior**  
National Park Service

**National Register of Historic Places**  
**Continuation Sheet**

Section number   9   Page  17 

Pathfinder Dam Historic District

Name of Property

Natrona, Wyoming

County and State

Name of multiple listing (if applicable)



Photo #17: South cableway tower and cableway powerhouse (part of Feature M and Feature N, contributing). Camera facing east. See Photo #47 for opposite view.

**United States Department of the Interior**  
**National Park Service**

**National Register of Historic Places**  
**Continuation Sheet**

Section number   9   Page  18 

Pathfinder Dam Historic District

Name of Property

Natrona, Wyoming

County and State

Name of multiple listing (if applicable)



Photo #18: Foundations (Feature O, non-contributing) on south side of canyon above the south access ladderway. Camera facing north. See historic photo #22 to view the buildings that stood here in 1940.



**United States Department of the Interior**  
National Park Service

**National Register of Historic Places**  
**Continuation Sheet**

Section number   9   Page  19 

Pathfinder Dam Historic District

Name of Property

Natrona, Wyoming

County and State

Name of multiple listing (if applicable)



Photo #19: South cableway tower , carriage assembly, and cableway powerhouse. Note U-bolt set into granite during dam construction, likely used as a crane or gaff guy wire anchor. Camera facing southwest.

**United States Department of the Interior**  
National Park Service

**National Register of Historic Places**  
**Continuation Sheet**

Section number   9   Page  20 

Pathfinder Dam Historic District

Name of Property

Natrona, Wyoming

County and State

Name of multiple listing (if applicable)



Photo #20: Long view of 1920 cableway system. From the left, cableway powerhouse, south tower, carriage cable and bucket hook system, and north tower. (Features M and N, contributing). Camera facing northwest.



**United States Department of the Interior**  
**National Park Service**

**National Register of Historic Places**  
**Continuation Sheet**

Section number   9   Page  21 

Pathfinder Dam Historic District

Name of Property

Natrona, Wyoming

County and State

Name of multiple listing (if applicable)



Photo #21: Pathfinder Dike (Element 2, contributing). Note hand placed granite rock protective facing on the upstream (right) side of the dike. The rubble rock visible on the downstream face is part of the earthen/rock matrix of the dike embankment. See historic photo #20 showing placement of the protective rock in 1910. Camera facing south from north end of the dike.

**United States Department of the Interior**  
National Park Service

**National Register of Historic Places**  
**Continuation Sheet**

Section number   9   Page  22 

Pathfinder Dam Historic District

Name of Property

Natrona, Wyoming

County and State

Name of multiple listing (if applicable)



Photo #22: Pathfinder Dike. Camera facing north from south end of dike.



**United States Department of the Interior**  
National Park Service

**National Register of Historic Places**  
**Continuation Sheet**

Section number   9   Page  23 

Pathfinder Dam Historic District

Name of Property

Natrona, Wyoming

County and State

Name of multiple listing (if applicable)



Photo #23: Pathfinder dam tender complex (Element 3, two contributing buildings). Camera facing northwest.



**United States Department of the Interior**  
**National Park Service**

**National Register of Historic Places**  
**Continuation Sheet**

Section number   9   Page  24 

Pathfinder Dam Historic District

Name of Property

Natrona, Wyoming

County and State

Name of multiple listing (if applicable)



Photo #24: Dam tender's house, main (south) elevation. Camera facing northwest.



**United States Department of the Interior**  
National Park Service

**National Register of Historic Places**  
**Continuation Sheet**

Section number   9   Page  25 

Pathfinder Dam Historic District

Name of Property

Natrona, Wyoming

County and State

Name of multiple listing (if applicable)



Photo #25: Pathfinder dam tender complex, house and barn west elevations. Camera facing east.



**United States Department of the Interior**  
National Park Service

**National Register of Historic Places**  
**Continuation Sheet**

Pathfinder Dam Historic District

Name of Property

Natrona, Wyoming

County and State

Name of multiple listing (if applicable)

Section number   9   Page  26 



Photo #26: Dam tender house east elevation. Camera facing west.



**United States Department of the Interior**  
National Park Service

**National Register of Historic Places**  
**Continuation Sheet**

Section number   9   Page  27 

Pathfinder Dam Historic District

Name of Property

Natrona, Wyoming

County and State

Name of multiple listing (if applicable)



Photo #27: Pathfinder dam tender complex barn, south and west elevations. Camera facing northeast.

**United States Department of the Interior**  
**National Park Service**

**National Register of Historic Places**  
**Continuation Sheet**

Section number   9   Page  28 

Pathfinder Dam Historic District

Name of Property

Natrona, Wyoming

County and State

Name of multiple listing (if applicable)



Photo #28: Pathfinder dam tender complex barn, north and east elevations. Note the spillway and Emergency and Sluice Gatehouses visible to the left of barn. Camera facing southwest.



**United States Department of the Interior**  
**National Park Service**

**National Register of Historic Places**  
**Continuation Sheet**

Pathfinder Dam Historic District

Name of Property

Natrona, Wyoming

County and State

Name of multiple listing (if applicable)

Section number   9   Page  29 



Photo #29: Secondary quarry (Element 7B, contributing site), with dam in background. Camera facing southeast.

**United States Department of the Interior**  
National Park Service

**National Register of Historic Places**  
**Continuation Sheet**

Pathfinder Dam Historic District

Name of Property

Natrona, Wyoming

County and State

Name of multiple listing (if applicable)

Section number   9   Page  30 



Photo #30: Secondary quarry. Camera facing east-northeast.



**United States Department of the Interior**  
**National Park Service**

**National Register of Historic Places**  
**Continuation Sheet**

Pathfinder Dam Historic District

Name of Property

Natrona, Wyoming

County and State

Name of multiple listing (if applicable)

Section number   9   Page  31 



Photo #31: Remnants of the main quarry (Element 7A, non-contributing), located adjacent to the spillway. Note the concrete dike to help direct water flow. Camera facing north.

**United States Department of the Interior**  
**National Park Service**

**National Register of Historic Places**  
**Continuation Sheet**

Section number   9   Page  32 

Pathfinder Dam Historic District

Name of Property

Natrona, Wyoming

County and State

Name of multiple listing (if applicable)



Photo #32: New spillway concrete ogee weir and apron (left, Feature J, non-contributing), facility access walkway (center, Feature I, non-contributing), and upper end of natural section of Pathfinder spillway (right, Feature H, contributing). Note the U-bolt set into the spillway bedrock. Camera facing north.



**United States Department of the Interior**  
**National Park Service**

**National Register of Historic Places**  
**Continuation Sheet**

Pathfinder Dam Historic District

Name of Property

Natrona, Wyoming

County and State

Name of multiple listing (if applicable)

Section number   9   Page  33 



Photo #33: Footbridge (outside district boundaries) across the North Platte River below Pathfinder Dam. Reconstructed circa 2000. A footbridge has been located at or near this location since the dam construction period. Camera facing east from dam crest. (Photo included for illustration purposes only)

**United States Department of the Interior**  
**National Park Service**

**National Register of Historic Places**  
**Continuation Sheet**

Section number   9   Page  34 

Pathfinder Dam Historic District

Name of Property

Natrona, Wyoming

County and State

Name of multiple listing (if applicable)



Photo #34: Stream gage station, south and west elevations (Element 6, contributing). Camera facing northeast.



**United States Department of the Interior**  
National Park Service

**National Register of Historic Places**  
**Continuation Sheet**

Section number   9   Page  35 

Pathfinder Dam Historic District

Name of Property

Natrona, Wyoming

County and State

Name of multiple listing (if applicable)



Photo #35: Stream gage station, east and south elevations. Camera facing northwest. See Photo #49 for north elevation view.



**United States Department of the Interior**  
**National Park Service**

**National Register of Historic Places**  
**Continuation Sheet**

Section number   9   Page  36 

Pathfinder Dam Historic District

Name of Property

Natrona, Wyoming

County and State

Name of multiple listing (if applicable)



Photo #36: Engineer's Camp (non-contiguous area, Element 5, contributing to the PDHD), overview looking south toward the river from the hilltop area that holds the principal concentration of camp features. Feature H, foundation, in foreground (see Site Drawing 6). Camera facing south.



**United States Department of the Interior**  
National Park Service

**National Register of Historic Places**  
**Continuation Sheet**

Section number   9   Page  37 

Pathfinder Dam Historic District

Name of Property

Natrona, Wyoming

County and State

Name of multiple listing (if applicable)



Photo #37: Engineer's Camp, Feature G in foreground. The view shows the ordered alignment of foundations that still convey the layout of the principal area of the camp. Note also that the foundations indicate structural characteristics of the vanished buildings. Camera facing southwest.



**United States Department of the Interior**  
National Park Service

**National Register of Historic Places**  
**Continuation Sheet**

Section number   9   Page  38 

Pathfinder Dam Historic District

Name of Property

Natrona, Wyoming

County and State

Name of multiple listing (if applicable)



Photo #38: Engineer's Camp, Feature C (concrete foundation) and associated concrete structure Feature B, north and west elevations. Camera facing east-southeast.



**United States Department of the Interior**  
National Park Service

**National Register of Historic Places**  
**Continuation Sheet**

Section number   9   Page  39 

Pathfinder Dam Historic District

Name of Property

Natrona, Wyoming

County and State

Name of multiple listing (if applicable)



Photo #39: Engineer's Camp Feature B, south and east elevations. Camera facing northwest.

**United States Department of the Interior**  
National Park Service

**National Register of Historic Places**  
**Continuation Sheet**

Pathfinder Dam Historic District

Name of Property

Natrona, Wyoming

County and State

Name of multiple listing (if applicable)

Section number   9   Page  40 



Photo #40: Interior of Feature B, view of North Platte River out of the window. Camera facing southeast.



**United States Department of the Interior**  
National Park Service

**National Register of Historic Places**  
**Continuation Sheet**

Pathfinder Dam Historic District

Name of Property

Natrona, Wyoming

County and State

Name of multiple listing (if applicable)

Section number   9   Page  41 



Photo #41: Cistern (Feature A) at Engineer's Camp. Camera facing south.



**United States Department of the Interior**  
National Park Service

**National Register of Historic Places**  
**Continuation Sheet**

Section number   9   Page  42 

Pathfinder Dam Historic District

Name of Property

Natrona, Wyoming

County and State

Name of multiple listing (if applicable)



Photo #42: Engineer's Camp, stone and mortar foundation (Feature I) in a secondary area of the camp. Camera facing southwest.



**United States Department of the Interior**  
National Park Service

**National Register of Historic Places**  
**Continuation Sheet**

Section number   9   Page  43 

Pathfinder Dam Historic District

Name of Property

Natrona, Wyoming

County and State

Name of multiple listing (if applicable)



Photo #43: Pathfinder facility and Pathfinder Reservoir overview. Camera facing west.

**United States Department of the Interior**  
National Park Service

**National Register of Historic Places**  
**Continuation Sheet**

Section number   9   Page  44 

Pathfinder Dam Historic District

Name of Property

Natrona, Wyoming

County and State

Name of multiple listing (if applicable)

**ADDENDUM (September 9, 2014)**



Photo #44: Upstream face of Pathfinder Dam from canyon floor. Camera facing west.



**United States Department of the Interior**  
National Park Service

**National Register of Historic Places**  
**Continuation Sheet**

Pathfinder Dam Historic District

Name of Property

Natrona, Wyoming

County and State

Name of multiple listing (if applicable)

Section number   9   Page  45 



Photo #45: Abandoned concrete access ladderway (Feature G, contributing) from canyon floor. Note rebar used as ladder rungs. Camera facing south.

**United States Department of the Interior**  
National Park Service

**National Register of Historic Places**  
**Continuation Sheet**

Section number   9   Page  46 

Pathfinder Dam Historic District

Name of Property

Natrona, Wyoming

County and State

Name of multiple listing (if applicable)



Photo #46: Stonework detail and plugged access gallery, downstream face Pathfinder Dam. Camera facing west.



**United States Department of the Interior**  
**National Park Service**

**National Register of Historic Places**  
**Continuation Sheet**

Pathfinder Dam Historic District

Name of Property

Natrona, Wyoming

County and State

Name of multiple listing (if applicable)

Section number   9   Page  47 



Photo #47: Cableway powerhouse (Feature N, contributing) south elevation. In foreground, guy and tension wire anchors for south cableway tower. Camera facing south.

**United States Department of the Interior**  
National Park Service

**National Register of Historic Places**  
**Continuation Sheet**

Section number   9   Page  48 

Pathfinder Dam Historic District

Name of Property

Natrona, Wyoming

County and State

Name of multiple listing (if applicable)



Photo #48: Detail of cableway bucket, hook, and carriage assembly (contributing). Camera facing west.



**United States Department of the Interior**  
National Park Service

**National Register of Historic Places**  
**Continuation Sheet**

Section number   9   Page  49 

Pathfinder Dam Historic District

Name of Property

Natrona, Wyoming

County and State

Name of multiple listing (if applicable)



Photo #49: North and east elevations, Stream Gage Station instrument house and concrete stilling well (Element 6, contributing). Camera facing southwest.

**United States Department of the Interior**  
National Park Service

**National Register of Historic Places**  
**Continuation Sheet**

Pathfinder Dam Historic District

Name of Property

Natrona, Wyoming

County and State

Name of multiple listing (if applicable)

Section number   9   Page  50 



Photo #50: Last known remnants of rail system (Feature R, contributing structure) used to haul blocks from the quarries to the dam. It is located next to the dam's upstream face just below the Emergency Gatehouse. Camera facing down and to the west.



**United States Department of the Interior**  
**National Park Service**

**National Register of Historic Places**  
**Continuation Sheet**

Section number   9   Page  51 

Pathfinder Dam Historic District

Name of Property

Natrona, Wyoming

County and State

Name of multiple listing (if applicable)

**Historic Photos**

(all photos courtesy of the Bureau of Reclamation; credit  
Reclamation upon use of these photographs)

Name of Property: Pathfinder Dam Historic District

Vicinity: Alcova

County: Natrona

State: Wyoming

Name of Photographer: Unknown, various U.S. Reclamation Service/ Bureau of Reclamation

Date of Photographs: 1905 through 1960s

Location of Original Digital Files: Bureau of Reclamation, Denver CO 80225

Number of Photographs: 23



Historic Photo #1, July 16, 1907, Pathfinder Dam, 22-horse freighter hauling cement and other construction materials from rail head at Casper to dam site, 47 miles distant.

**United States Department of the Interior**  
**National Park Service**

**National Register of Historic Places**  
**Continuation Sheet**

Pathfinder Dam Historic District

Name of Property

Natrona, Wyoming

County and State

Name of multiple listing (if applicable)

Section number   9   Page  52 



Historic Photo #2: Pathfinder Damsite. This view was taken August 17, 1905 from a point a short distance below the damsite. It shows the river at low water. At the foot of the canyon wall on the right of the picture is the outlet of the north tunnel. The spoil in the channel further up the stream shows the location of the north tunnel intake. The location of the shaft is shown by the waste material near the top of the canyon wall.



**United States Department of the Interior**  
**National Park Service**

**National Register of Historic Places**  
**Continuation Sheet**

Pathfinder Dam Historic District

Name of Property

Natrona, Wyoming

County and State

Name of multiple listing (if applicable)

Section number   9   Page  53 



Historic Photo #3: View taken January 23, 1906, and shows starting of excavation for the dam's foundation. All loose material was removed and the top of the rock removed to a sound bedrock foundation only 10 feet below the ground surface.

**United States Department of the Interior**  
National Park Service

**National Register of Historic Places**  
**Continuation Sheet**

Section number   9   Page  54 

Pathfinder Dam Historic District

Name of Property

Natrona, Wyoming

County and State

Name of multiple listing (if applicable)



Historic Photo #4: January 31, 1906, Pathfinder Dam site looking upstream.



**United States Department of the Interior**  
National Park Service

**National Register of Historic Places**  
**Continuation Sheet**

Section number   9   Page  55 

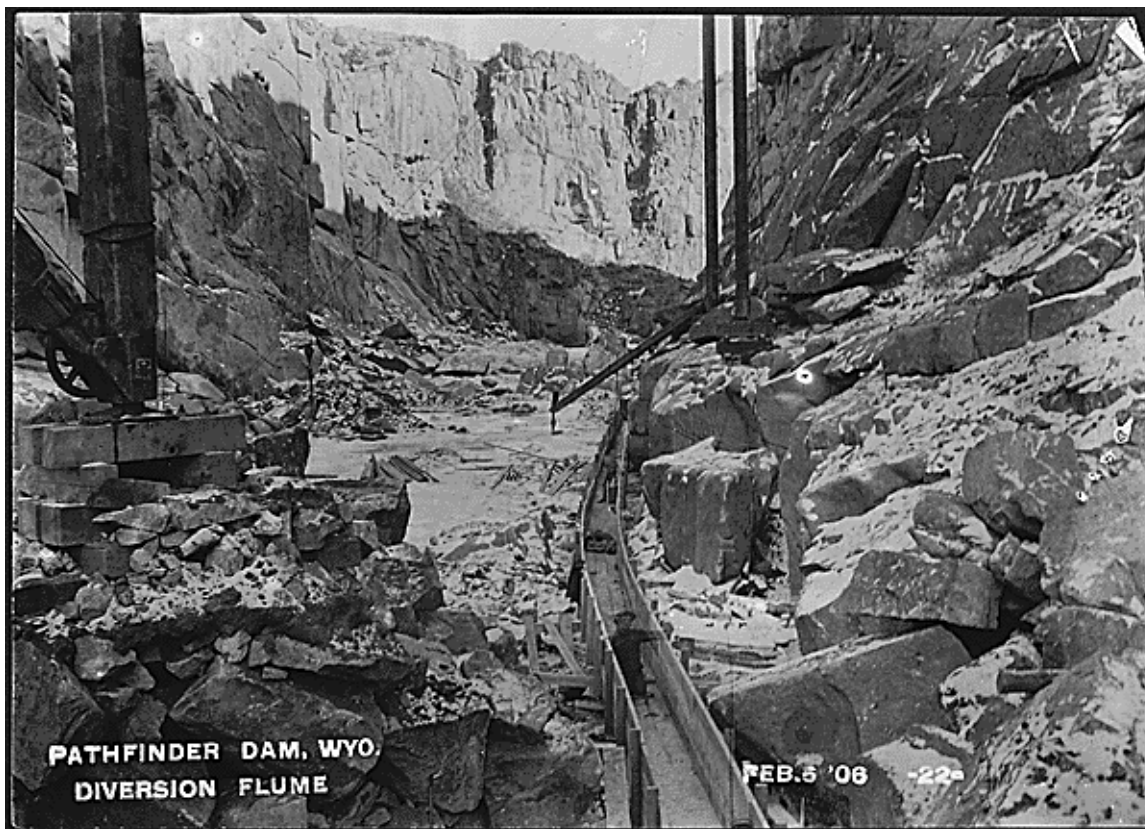
Pathfinder Dam Historic District

Name of Property

Natrona, Wyoming

County and State

Name of multiple listing (if applicable)



Historic Photo #5: Pathfinder Dam diversion flume, February 6, 1906

**United States Department of the Interior**  
**National Park Service**

**National Register of Historic Places**  
**Continuation Sheet**

Section number   9   Page  56 

Pathfinder Dam Historic District

Name of Property

Natrona, Wyoming

County and State

Name of multiple listing (if applicable)



Historic Photo #6: Pathfinder Dam, laying the first stone, August 15, 1906



**United States Department of the Interior**  
**National Park Service**

**National Register of Historic Places**  
**Continuation Sheet**

Pathfinder Dam Historic District

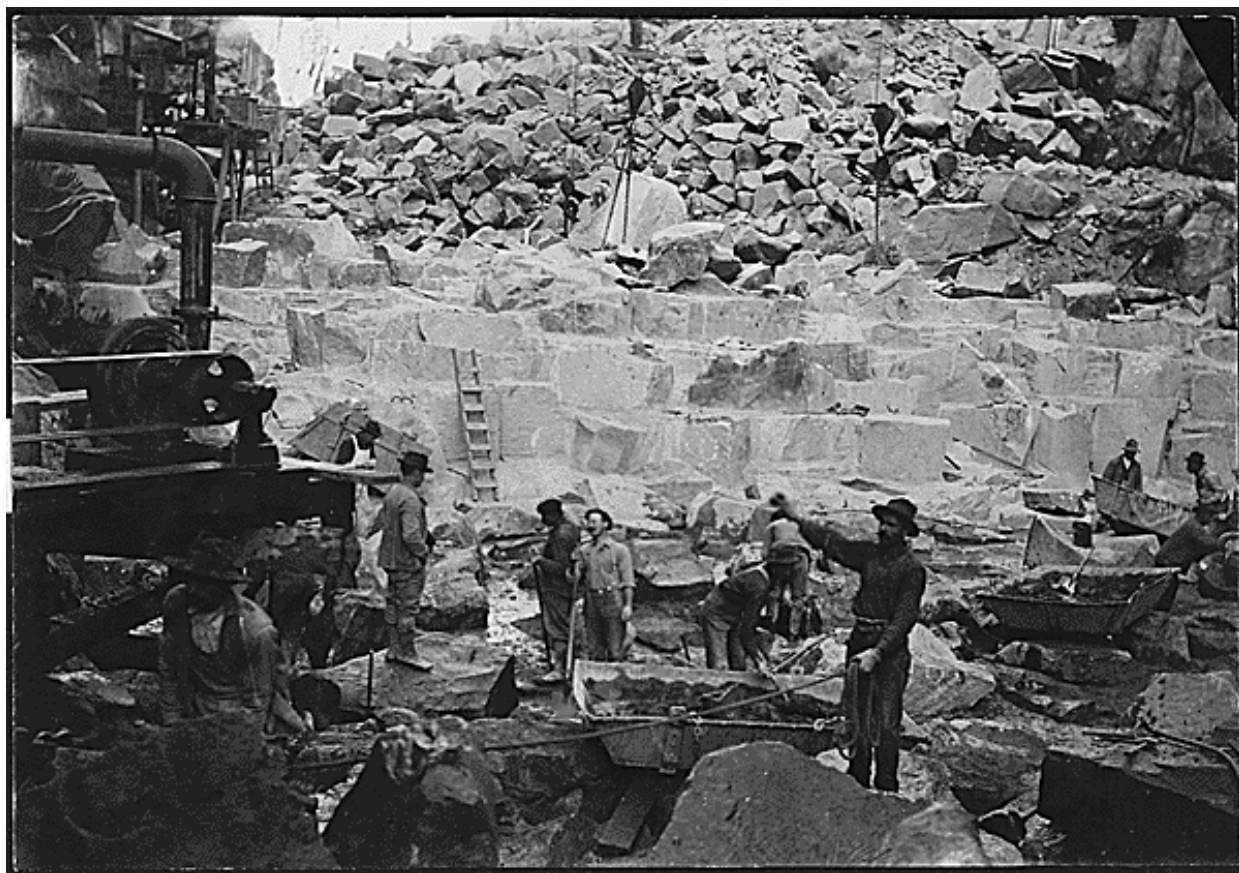
Name of Property

Natrona, Wyoming

County and State

Name of multiple listing (if applicable)

Section number   9   Page  57 



Historic Photo #7: October 1, 1906, Pathfinder Dam, progress of masonry.

**United States Department of the Interior**  
**National Park Service**

**National Register of Historic Places**  
**Continuation Sheet**

Section number   9   Page  58 

Pathfinder Dam Historic District

Name of Property

Natrona, Wyoming

County and State

Name of multiple listing (if applicable)



Historic Photo #8: June 8, 1907, Pathfinder Dam, Downstream Face During Flood



**United States Department of the Interior**  
National Park Service

**National Register of Historic Places**  
**Continuation Sheet**

Section number   9   Page  59 

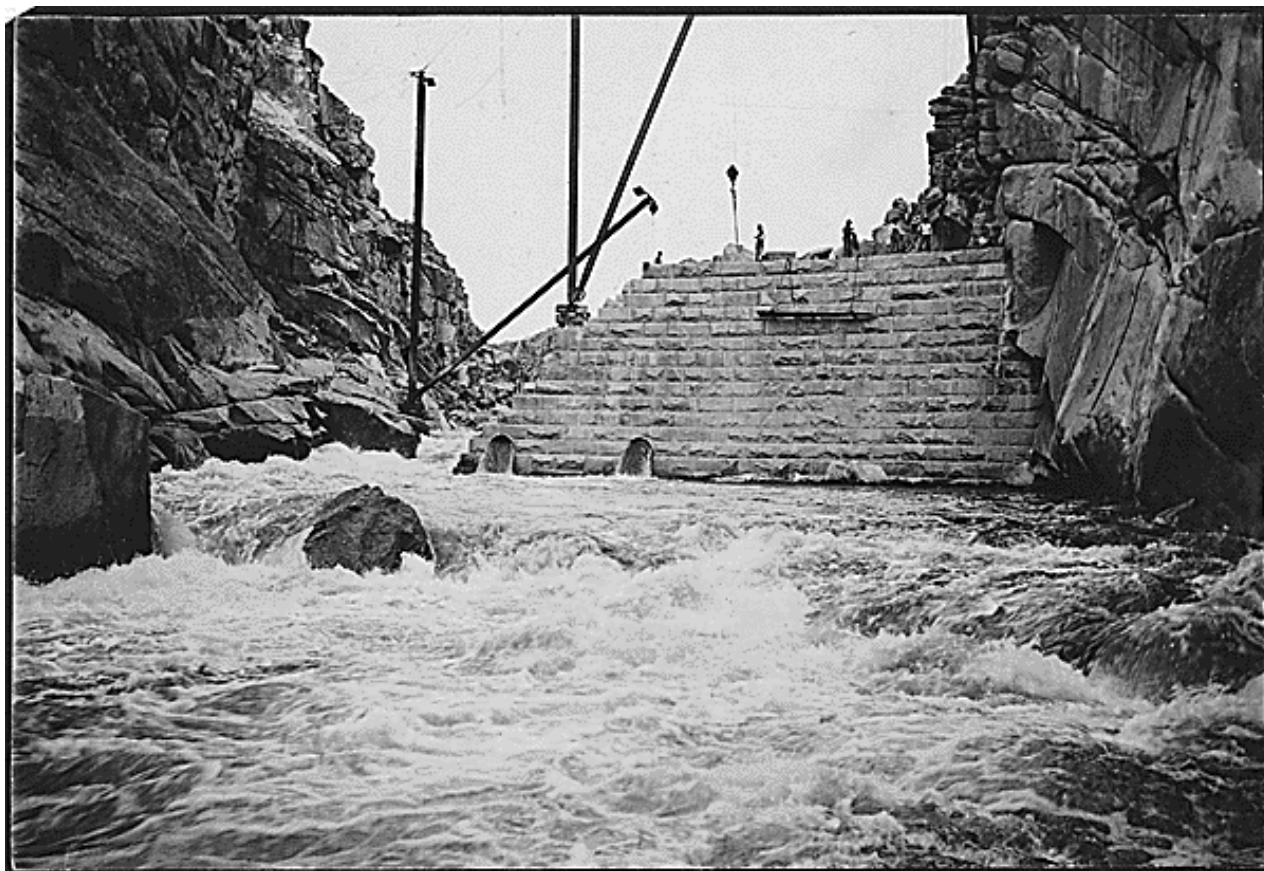
Pathfinder Dam Historic District

Name of Property

Natrona, Wyoming

County and State

Name of multiple listing (if applicable)



Historic Photo #9: July 26, 1907, Pathfinder Dam, downstream face.

**United States Department of the Interior**  
National Park Service

**National Register of Historic Places**  
**Continuation Sheet**

Pathfinder Dam Historic District

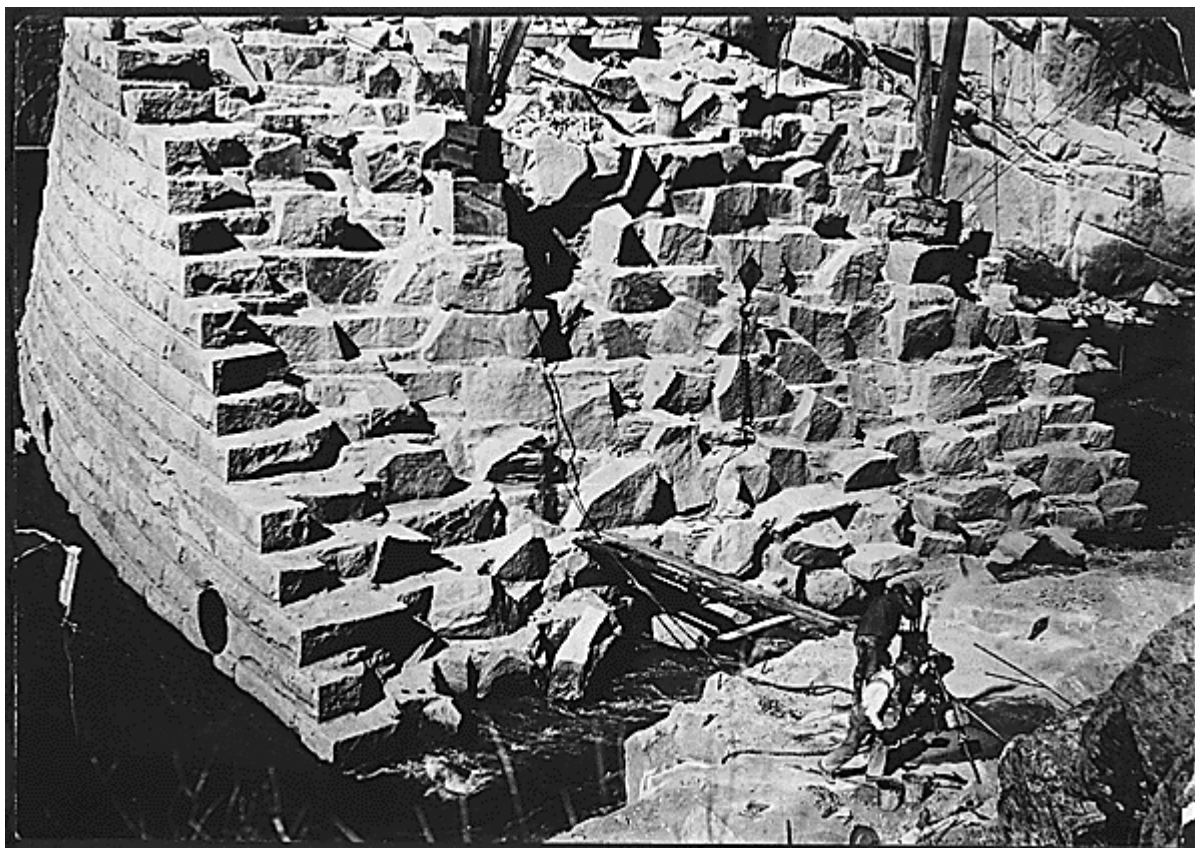
Name of Property

Natrona, Wyoming

County and State

Name of multiple listing (if applicable)

Section number   9   Page  60 



Historic Photo #10: August 9, 1907, rock in masonry, north side of notch. View shows the internal cyclopean masonry structure of the dam and the finished stone façade.



**United States Department of the Interior**  
**National Park Service**

**National Register of Historic Places**  
**Continuation Sheet**

Section number 9 Page 61

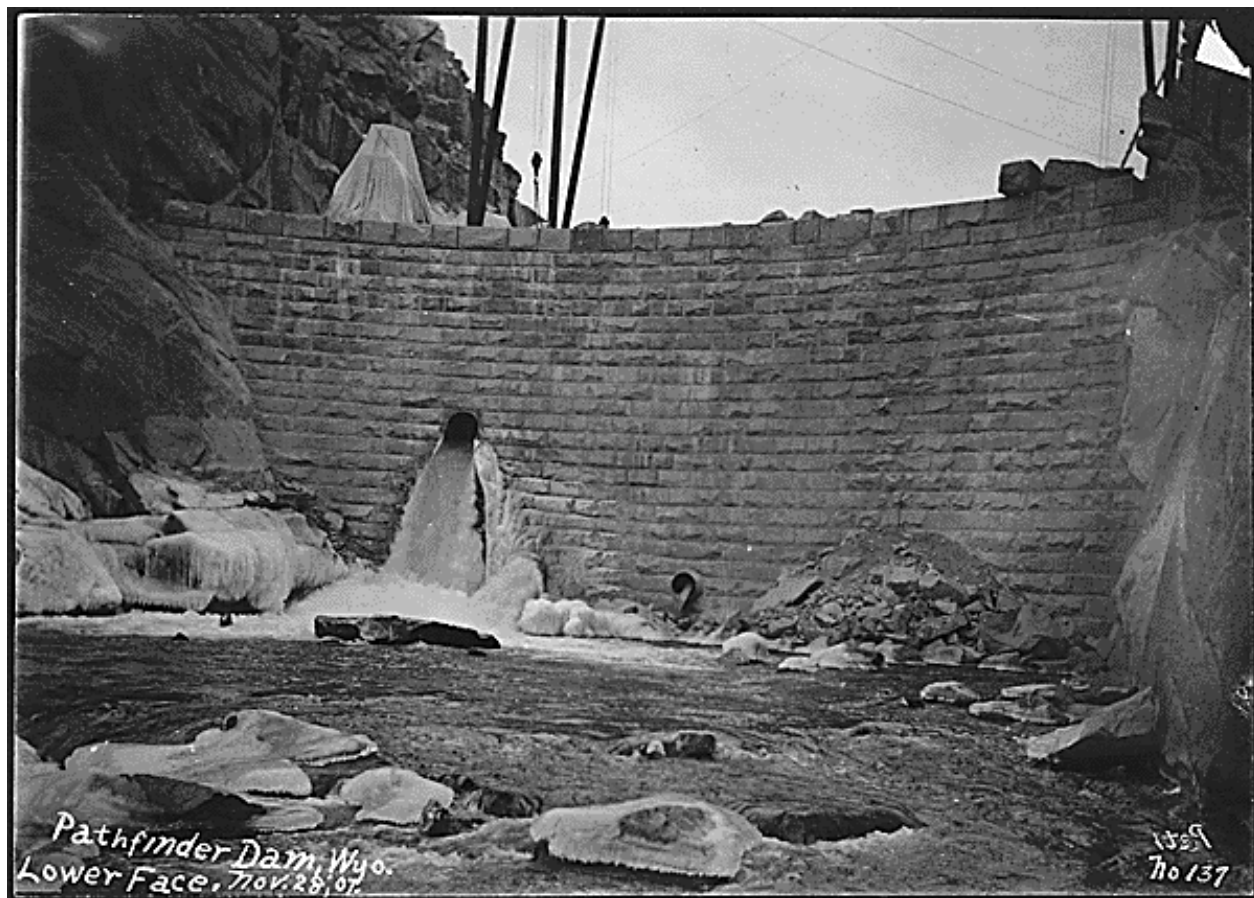
Pathfinder Dam Historic District

Name of Property

Natrona, Wyoming

County and State

Name of multiple listing (if applicable)



Historic Photo #11: November 29, 1907, Pathfinder Dam, downstream face.

**United States Department of the Interior**  
National Park Service

**National Register of Historic Places**  
**Continuation Sheet**

Section number   9   Page  62 

Pathfinder Dam Historic District

Name of Property

Natrona, Wyoming

County and State

Name of multiple listing (if applicable)



Historic Photo #13 1908, Pathfinder Dam, three-foot face stones in storage



**United States Department of the Interior**  
**National Park Service**

**National Register of Historic Places**  
**Continuation Sheet**

Section number   9   Page  63 

Pathfinder Dam Historic District

Name of Property

Natrona, Wyoming

County and State

Name of multiple listing (if applicable)



Historic Photo #13: 1908, Pathfinder Dam upstream face. North towers of original two cableway systems shown. Note exposed access ladder on left hand side of canyon, precursor to the enclosed ladderway built a few years later. Emergency Gatehouse under construction (structure immediately next to dam).

**United States Department of the Interior**  
National Park Service

**National Register of Historic Places**  
**Continuation Sheet**

Section number   9   Page  64 

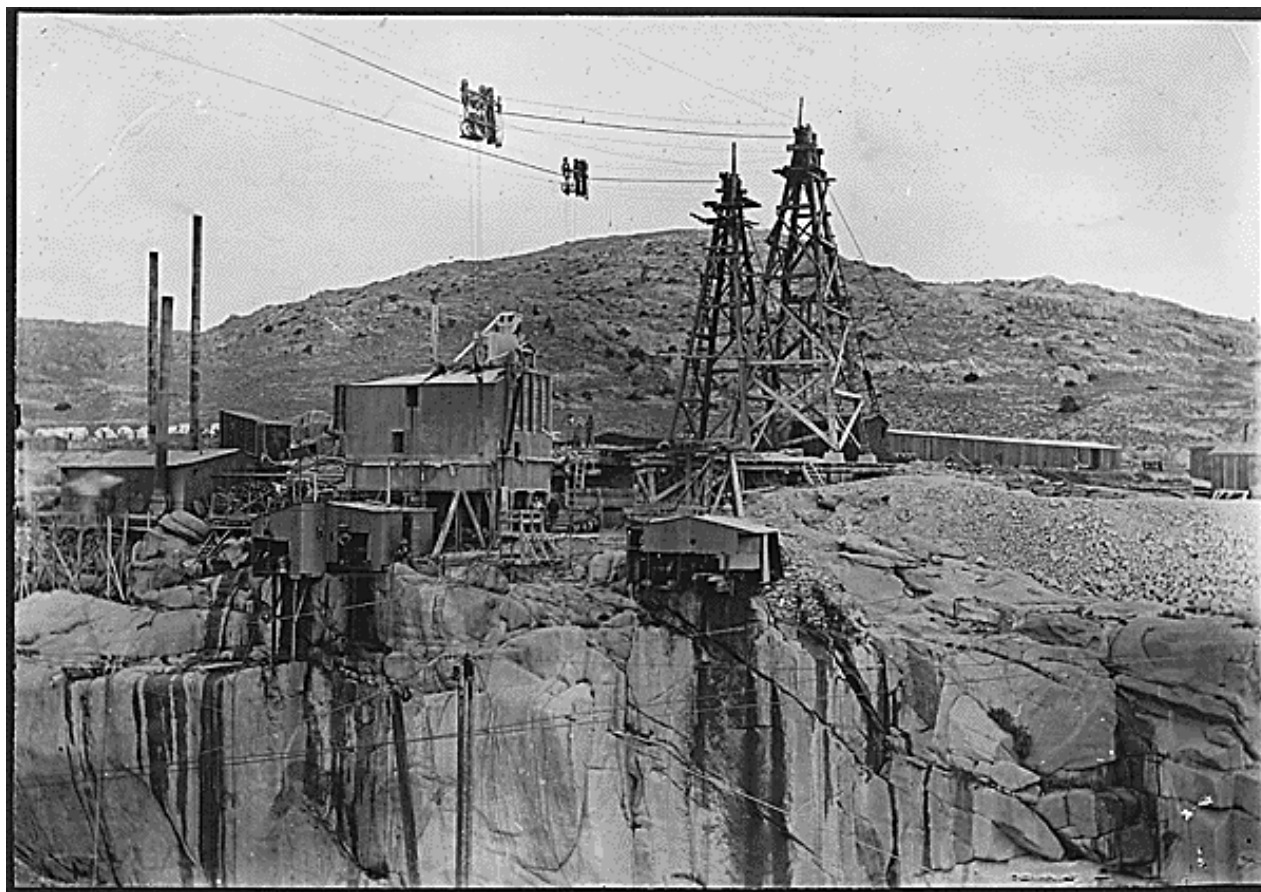
Pathfinder Dam Historic District

Name of Property

Natrona, Wyoming

County and State

Name of multiple listing (if applicable)



Historic Photo #14: July 12, 1908, Pathfinder Dam, contractor's plant on north side of canyon



**United States Department of the Interior**  
National Park Service

**National Register of Historic Places**  
**Continuation Sheet**

Section number   9   Page  65 

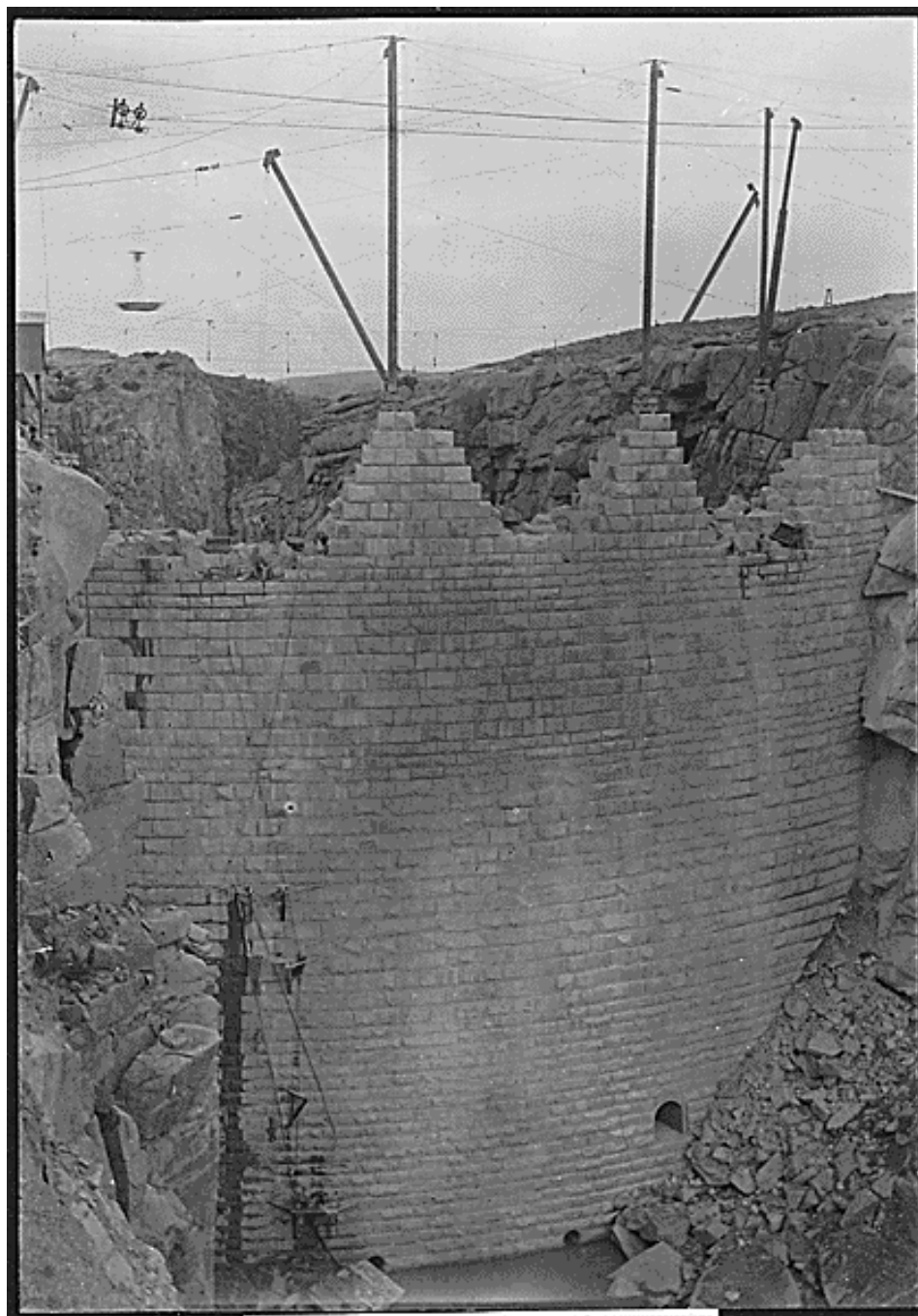
Pathfinder Dam Historic District

Name of Property

Natrona, Wyoming

County and State

Name of multiple listing (if applicable)



Historic Photo #15: Septemeber 27, 1908, Pathfinder Dam, upstream face

**United States Department of the Interior**  
National Park Service

**National Register of Historic Places**  
**Continuation Sheet**

Section number   9   Page  66 

Pathfinder Dam Historic District

Name of Property

Natrona, Wyoming

County and State

Name of multiple listing (if applicable)



Historic Photo #16: February 5, 1909, grillage at entrance to (north) Pathfinder Tunnel



**United States Department of the Interior**  
**National Park Service**

**National Register of Historic Places**  
**Continuation Sheet**

Section number   9   Page  67 

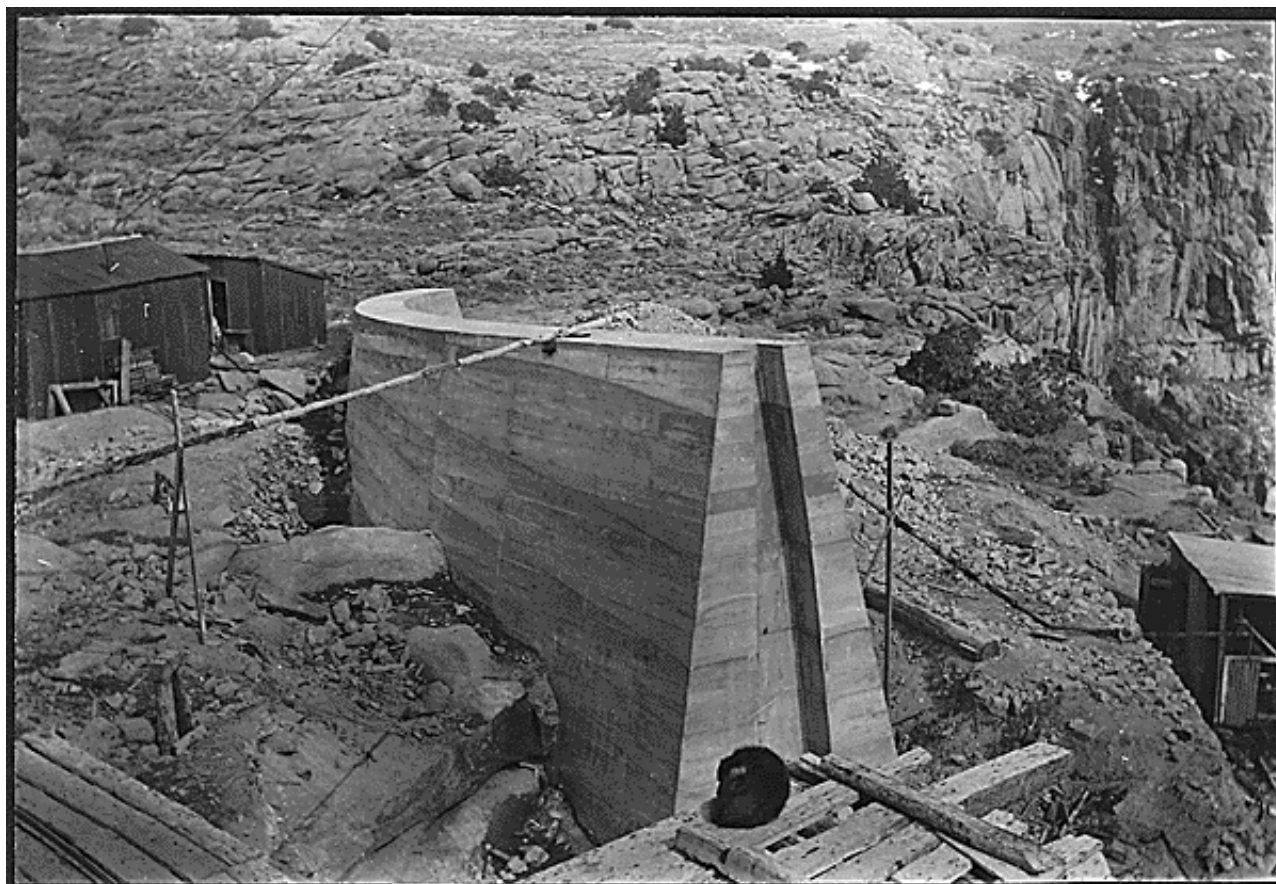
Pathfinder Dam Historic District

Name of Property

Natrona, Wyoming

County and State

Name of multiple listing (if applicable)



Historic Photo #17: March 20, 1909, Pathfinder Dam, spillway training wall

**United States Department of the Interior**  
**National Park Service**

**National Register of Historic Places**  
**Continuation Sheet**

Section number   9   Page  68 

Pathfinder Dam Historic District

Name of Property

Natrona, Wyoming

County and State

Name of multiple listing (if applicable)



Historic Photo #18: October 19, 1909, Pathfinder Dam, upstream face. Old cableway system north tower in upper right corner



**United States Department of the Interior**  
National Park Service

**National Register of Historic Places**  
**Continuation Sheet**

Section number   9   Page  69 

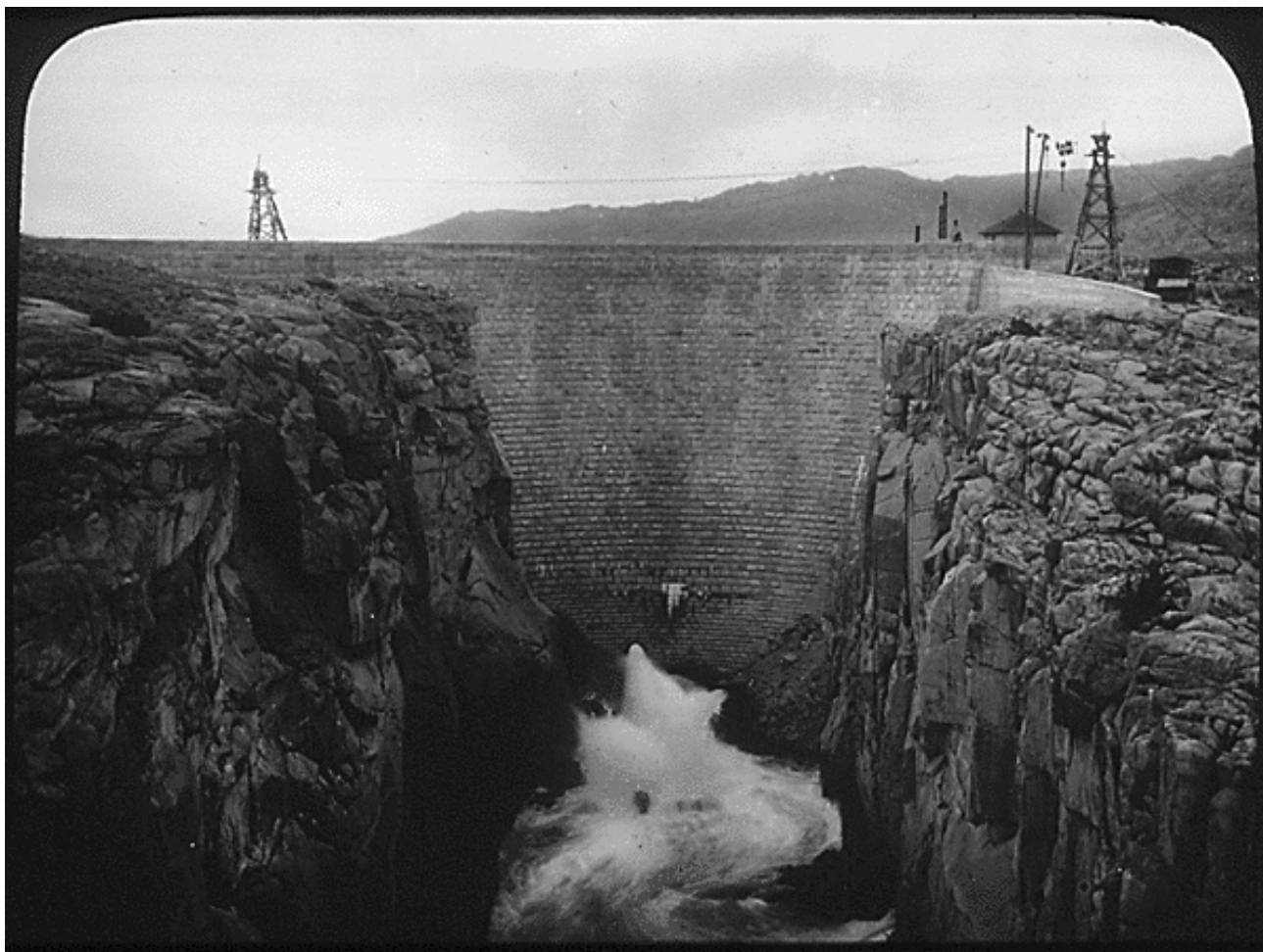
Pathfinder Dam Historic District

Name of Property

Natrona, Wyoming

County and State

Name of multiple listing (if applicable)



Historic Photo #19: Pathfinder Dam, 1909, showing river outflow from the dam conduit outlet. Note that one of the two original cableway systems remains in use. The Emergency Gatehouse roof is visible at right.

**United States Department of the Interior**  
**National Park Service**

**National Register of Historic Places**  
**Continuation Sheet**

Section number   9   Page  70 

Pathfinder Dam Historic District

Name of Property

Natrona, Wyoming

County and State

Name of multiple listing (if applicable)



Historic Photo #20: August 8, 1910, Pathfinder Dike, showing stone paving on upstream face.



**United States Department of the Interior**  
**National Park Service**

**National Register of Historic Places**  
**Continuation Sheet**

Section number   9   Page  71 

Pathfinder Dam Historic District

Name of Property

Natrona, Wyoming

County and State

Name of multiple listing (if applicable)



Historic Photo #21: September 1, 1906, Pathfinder Dam gatekeeper's (dam tender) house

**United States Department of the Interior**  
**National Park Service**

**National Register of Historic Places**  
**Continuation Sheet**

Section number   9   Page  72 

Pathfinder Dam Historic District

Name of Property

Natrona, Wyoming

County and State

Name of multiple listing (if applicable)



Historic Photo #22: Pathfinder Dam, 1940, view looking west at the dam's downstream face. Note the 1920 cableway (extant today), walkway from dam gallery to south outlet tunnel valve house (no longer extant) and south access ladderway (largely extant), and buildings (no longer extant) at the south abutment. Also note Sluice Gatehouse (upper right, extant) still have the gate operating superstructure that was removed during the 1990s north tunnel outlet works renovations.



**United States Department of the Interior**  
National Park Service

**National Register of Historic Places**  
**Continuation Sheet**

Section number   9   Page  73 

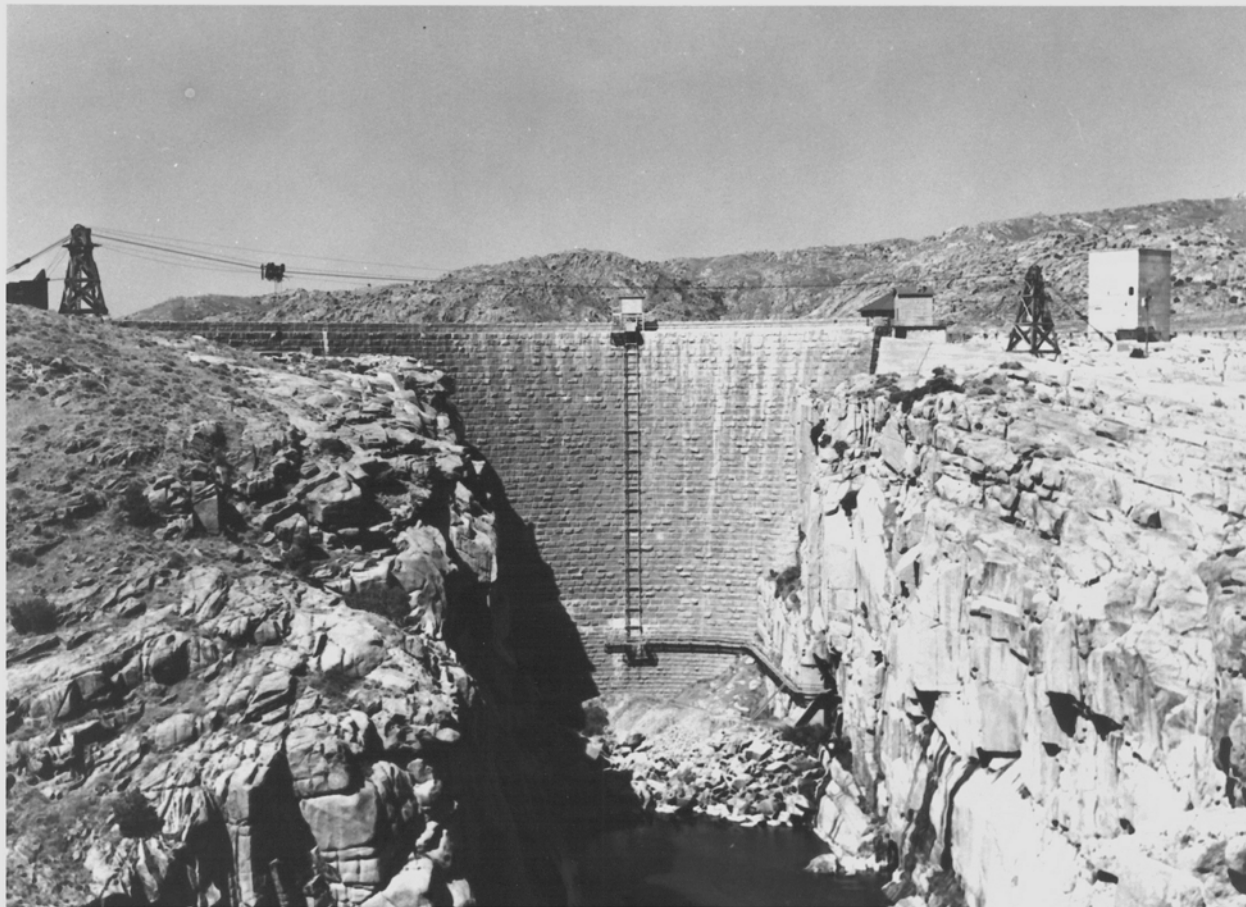
Pathfinder Dam Historic District

Name of Property

Natrona, Wyoming

County and State

Name of multiple listing (if applicable)



Historic Photo #23: Pathfinder Dam, 1960s. Note Fremont Canyon Power Conduit Fixed Wheel Gatehouse is now present at far upper right, and a walkway has been constructed from elevator to the High-pressure Gatehouse and river outlet works control structure on north side of the canyon.